

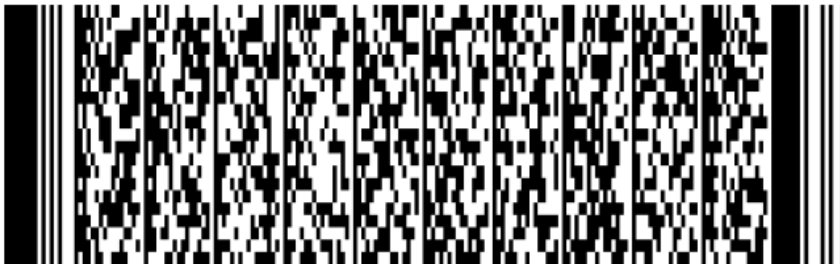
Enterprise Home Screen: Creating Settings Shortcuts

Summary

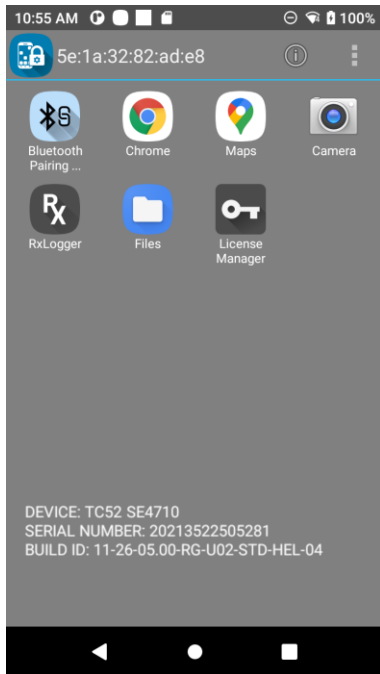
Customers often require a subset of the Android system Settings to be available to users and it can be time consuming to identify the required intent to launch specific settings and to create a method to do this e.g. via a custom application. This article details how to easily create shortcuts to required settings from EHS with the assistance of this Shortcut Maker utility available on Play (<https://play.google.com/store/search?q=shortcut%20maker&c=apps>)

Method

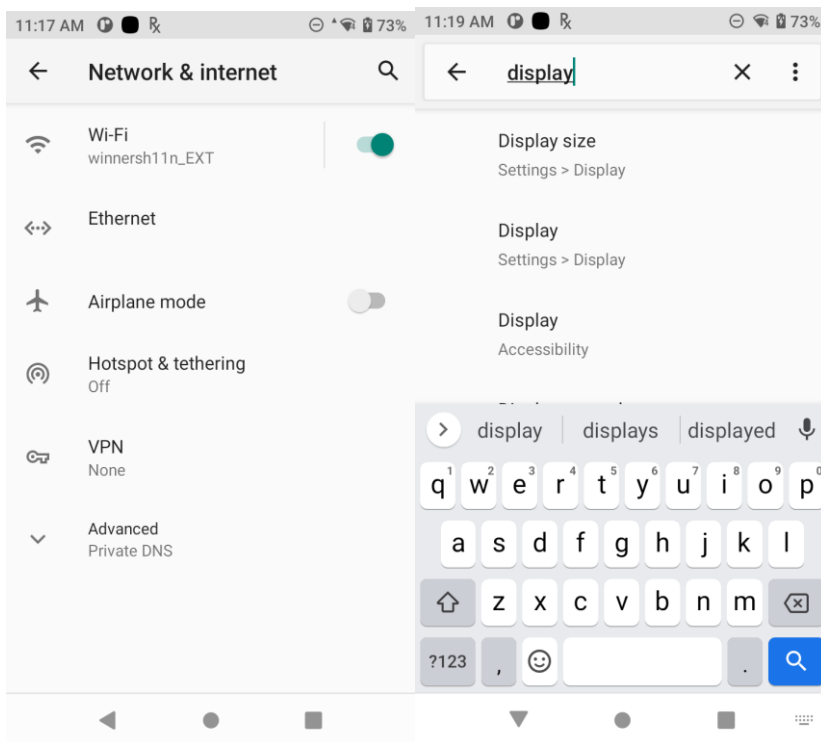
1. Install the EHS configuration (which includes Shortcut Maker) via the internet-hosted StageNow barcode below :



2. When installed , you should see a home screen similar to the one below :

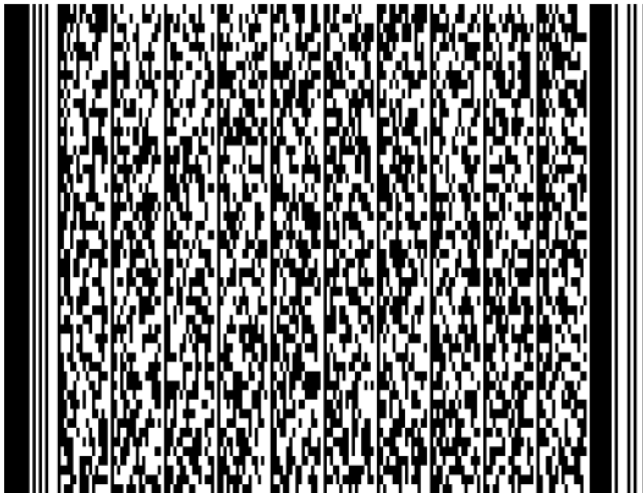


3. The default when accessing Settings is to show the search icon in top right - this allows access to any other system settings using search by name i.e. it does not enforce lockdown to a specific setting.

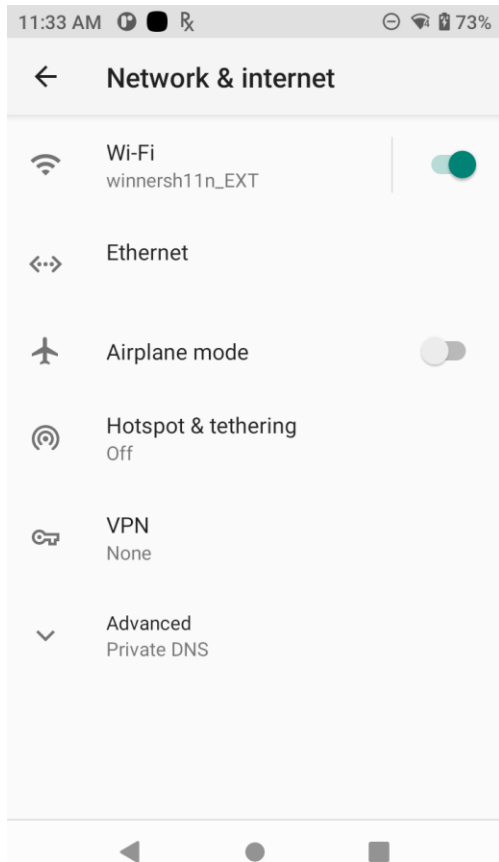


The Search icon process is named com.android.settings.intelligence and can be disabled using Mx AppMgr using the XML below or via the StageNow barcode below:

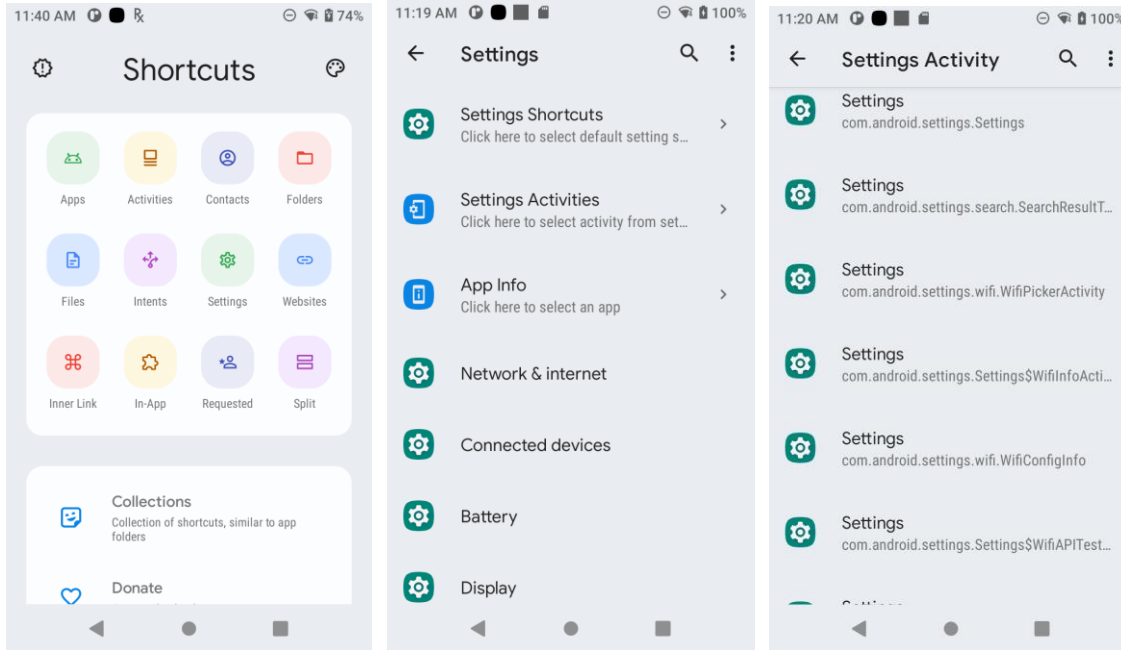
```
<characteristic version="8.0" type="AppMgr">  
  <parm name="Action" value="DisableApplication" />  
  <parm name="Package" value="com.android.settings.intelligence" />  
</characteristic>
```



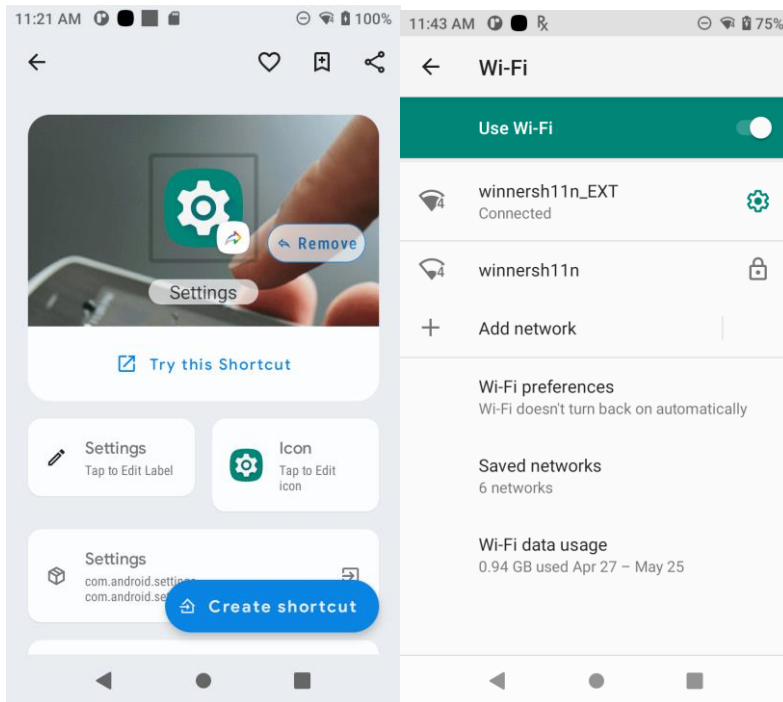
Once this is done , the search icon will no longer be visible in any Settings screens:



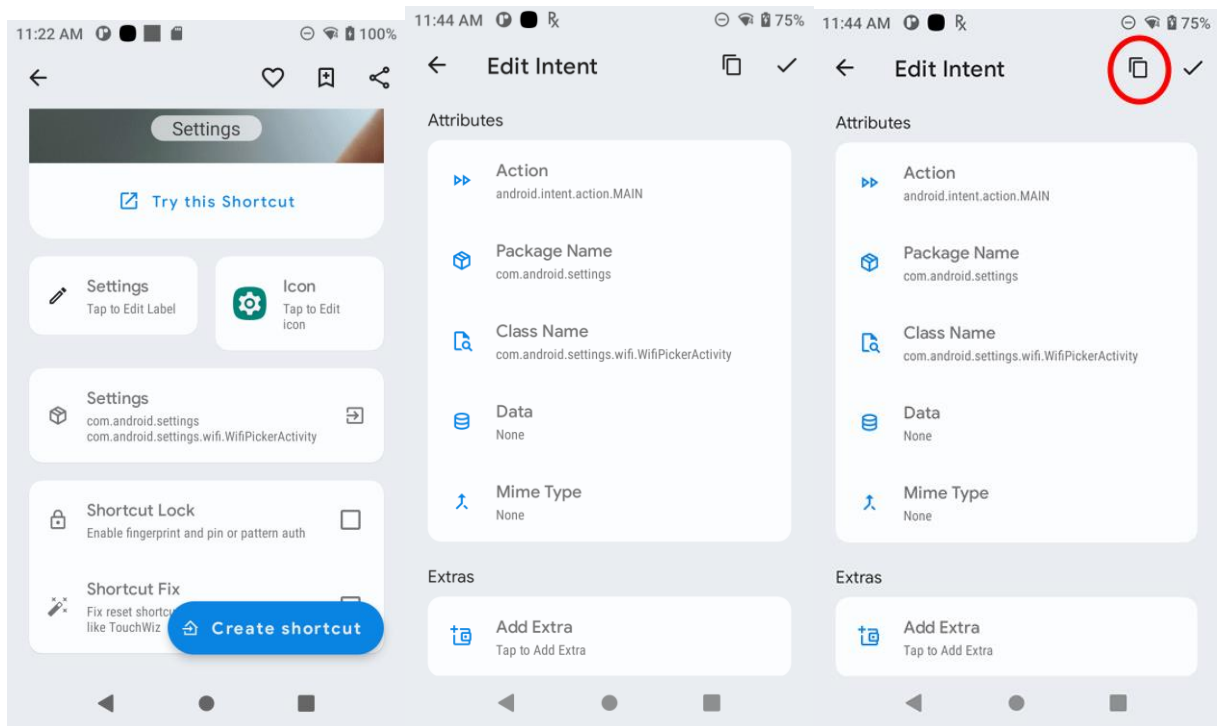
4. A settings intent can now be used to launch specific settings such as WiFi and Bluetooth without allowing access to other Settings via Search. To create the required intent , select 'Add Apps' from the EHS Tools menu in order to run Shortcut Maker. Then select Settings , scroll down to select Settings Activity , expand the list and locate the required setting (Wi-Fi Picker in this case)



5. The required Settings activity can be selected and tested in Shortcut Maker . Note that there is an option in this app to Create Shortcut. This will add the current shortcut to the EHS launcher but the shortcut will not be persistent i.e. if the resulting enterprisehomescreen.xml file is copied to another device, the shortcut will not work and will have to be recreated manually .



If it works as expected, the intent can be copied from the Shortcut details page to the clipboard as shown:



6. If connected to the device via Vysor, the clipboard contents will also be automatically copied to the PC clipboard and can be pasted into a text editor as shown below:

```

1 Action=android.intent.action.MAIN
2 Package Name=com.android.settings
3 Class Name=com.android.settings/com.android.settings.wifi.WifiPickerActivity
4 Extras=>
5

```

7. Copy the existing EHS config file from /enterprise/usr to the PC e.g. via ADB

Adb pull /enterprise/usr/enterprisehomescreen.xml

Edit the file and add a new shortcut either in the Tools menu or in the Apps list . Copy the package name and class name from the pasted info above into the respective fields in the EHS XML file:

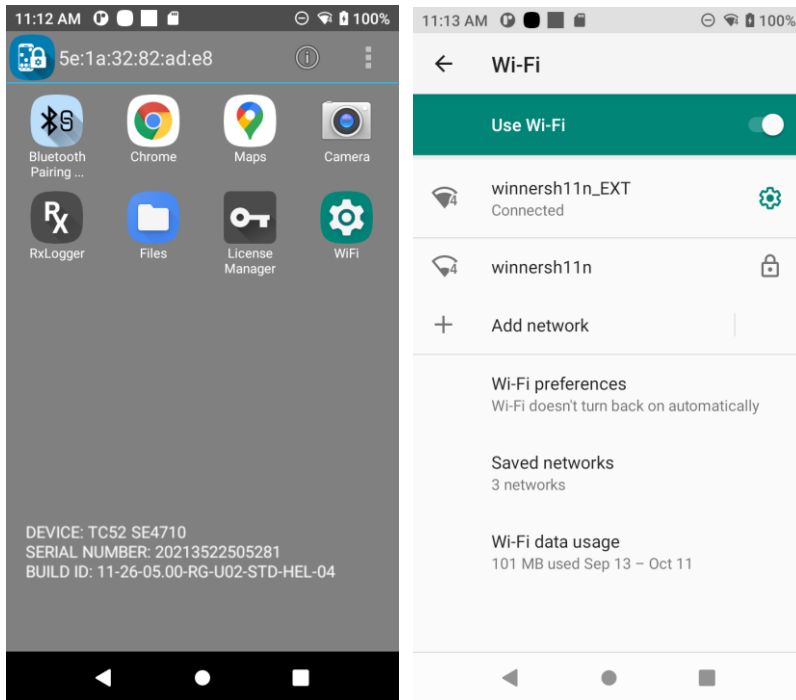
```

<!-- SETTINGS INTENTS -->
<application label="WiFi" package="com.android.settings" activity="com.android.settings.wifi.WifiPickerActivity"/>

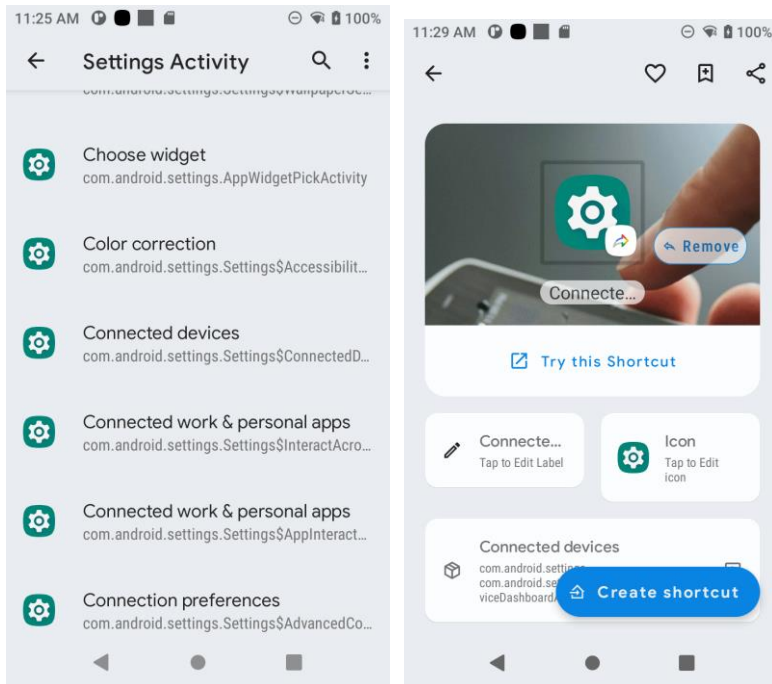
```

8. Save the file and copy back to the device via ADB to see the new shortcut:

adb push enterprisehomescreen.xml /enterprise/usr



9. For Bluetooth pairing , follow the same instructions below and select the Connected Devices activity:



```

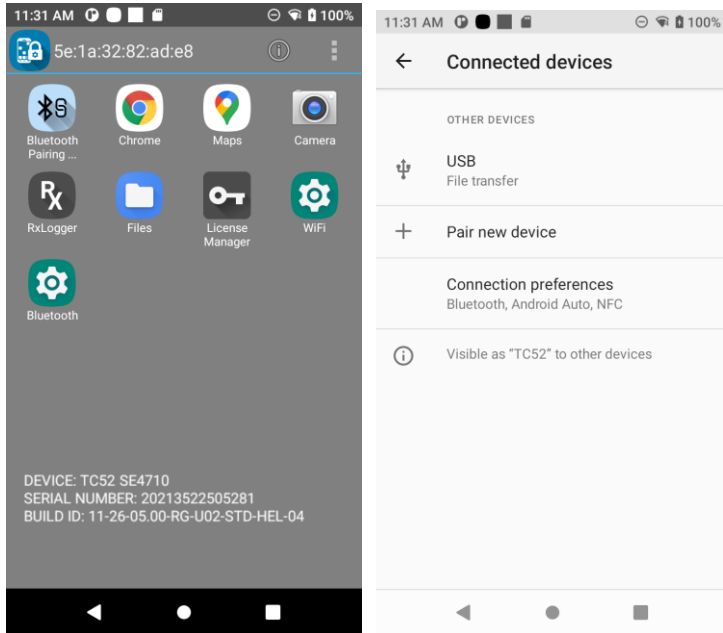
1 Action=android.intent.action.MAIN
2 Package Name=com.android.settings
3 Class Name=com.android.settings/com.android.settings.Settings$ConnectedDeviceDashboardActivity
4 Extras=>
5

```

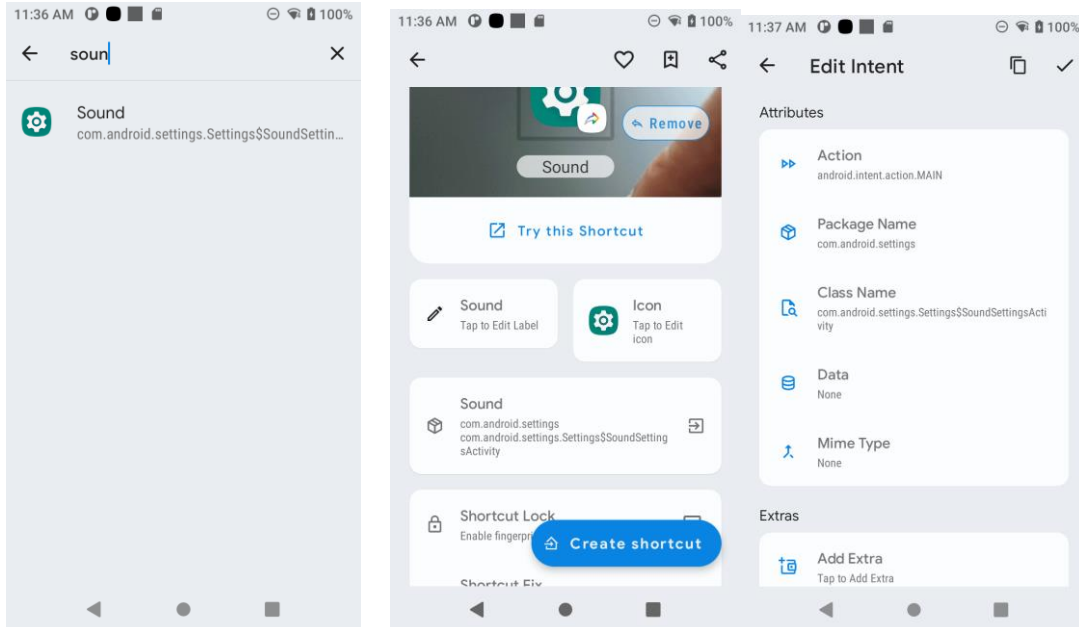
```

<!-- SETTINGS INTENTS -->
<application label="WiFi" package="com.android.settings" activity="com.android.settings.wifi.WifiPickerActivity"/>
<application label="Bluetooth" package="com.android.settings" activity="com.android.settings.Settings$ConnectedDeviceDashboardActivity"/>

```

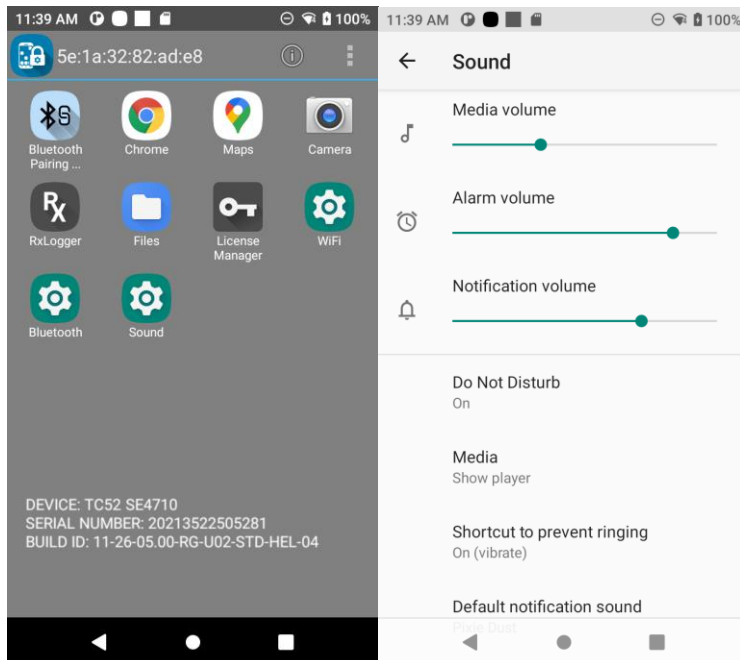


10. For Sound Settings, search for Sound and select the resulting shortcut:

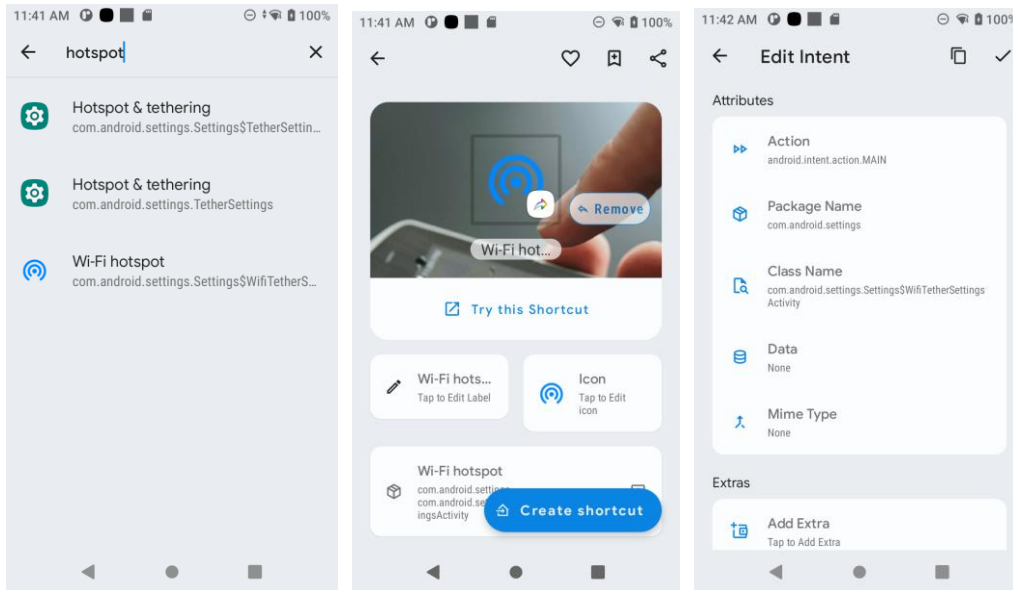



```
1 Action=android.intent.action.MAIN
2 Package Name=com.android.settings
3 Class Name=com.android.settings/com.android.settings.Settings$SoundSettingsActivity
4 Extras=>
5
```

```
<!-- SETTINGS INTENTS -->
<application label="WiFi" package="com.android.settings" activity="com.android.settings.wifi.WifiPickerActivity"/>
<application label="Bluetooth" package="com.android.settings" activity="com.android.settings.Settings$ConnectedDeviceDashboardActivity"/>
<application label="Sound" package="com.android.settings" activity="com.android.settings.Settings$SoundSettingsActivity"/>
```

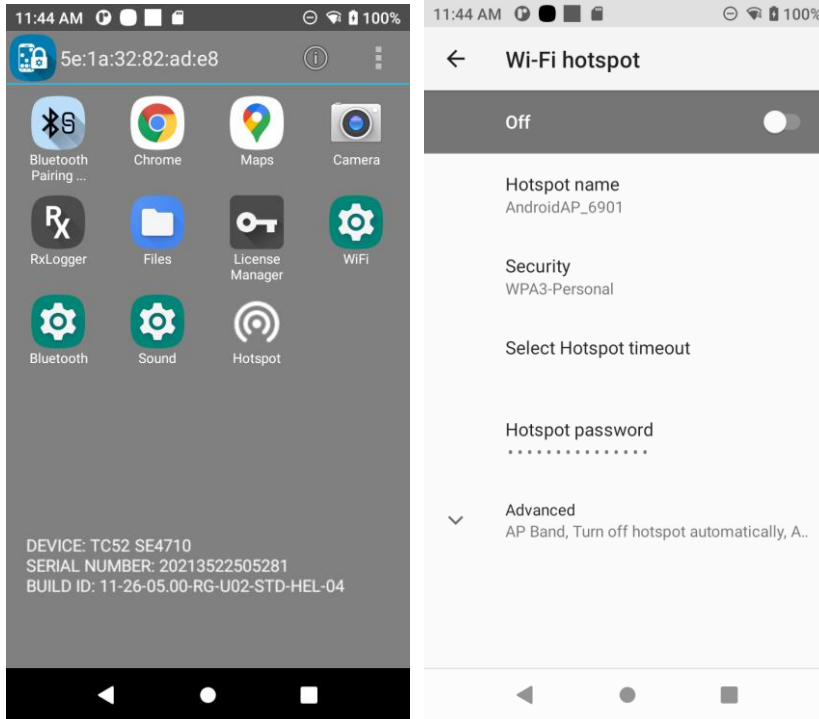


11. For Hotspot Settings, search for hotspot and select the resulting shortcut:



```
1 Action=android.intent.action.MAIN
2 Package Name=com.android.settings
3 Class Name=com.android.settings/com.android.settings.Settings$WifiTetherSettingsActivity
4 Extras=>
5
```

```
<!-- SETTINGS INTENTS -->
<application label="WiFi" package="com.android.settings" activity="com.android.settings.wifi.WifiPickerActivity"/>
<application label="Bluetooth" package="com.android.settings" activity="com.android.settings.Settings$ConnectedDeviceDashboardActivity"/>
<application label="Sound" package="com.android.settings" activity="com.android.settings.Settings$SoundSettingsActivity"/>
<application label="Hotspot" package="com.android.settings" activity="com.android.settings.Settings$WifiTetherSettingsActivity"/>
```



- The Quick Setting icons in the Notification pulldown can be disabled via Mx in order to prevent user access to Settings via Notification while still allowing access to Settings which have been added to the EHS configuration

```

<characteristic version="7.1" type="UiMgr">
<!--NOTIFICATION BAR PULLDOWN-->
  <param name="NotificationPullDown" value="1" />
  <!--NOTIFICATION SETTINGS ICON-->
  <param name="NotificationSettings" value="2" />
  <!--QUICKSETTINGS ICON DISPLAY-->
  <param name="QuickSettings" value="2" />
</characteristic>

```

11:52 AM

This device belongs to your organization ⓘ

Rx

- Sound Settings
- Install from External Storage
- Enterprise Browser
- Workstation Connect
- Chrome
- WiFiSettings

11:52 AM

Wed, May 25 76%

Notifications

Android System

USB debugging connected
Tap to turn off USB debugging

WorkstationConnect • 21h

Zebra Desktop Managed Configuration is running

Chrome WiFiSettings

Silent

Rx com.symbol.dd.DDServiceApp

RxLogger
Running

